

Bluetooth (BT) Block Data Sheet

BT 100616

SPECIFICATIONS

- > **Pairing Code:** 1234
- > **Range:** ~10m (in line of sight)
- > **Baud Rate:** 115200kbps
- > **Reliable Throughput:** 64kbps
- > **Input Voltage Range:** 3.3-5.0V
- > **Consumption:** ~40mA

FEATURES

- > HC-06 module¹
- > Bluetooth 2.0 + EDR chipset
- > UART interface
- > Programmable baud rate
- > Integrated PCB antenna
- > Plug & play operation

APPLICATIONS

- > Rapid prototyping of custom hardware
- > Biomedical engineering projects

GENERAL DESCRIPTION

This ready-to-use Bluetooth module is a perfect match for uncompromised real-time wireless data streaming using our MCU block. The Bluetooth 2.0 + EDR chipset provides maximum multiplatform compatibility both for mobile and desktop applications, given that most mainstream operating systems have compatible drivers by default.

ORDERING GUIDE

Part #	Description
COMP-BT	Bluetooth (BT) block

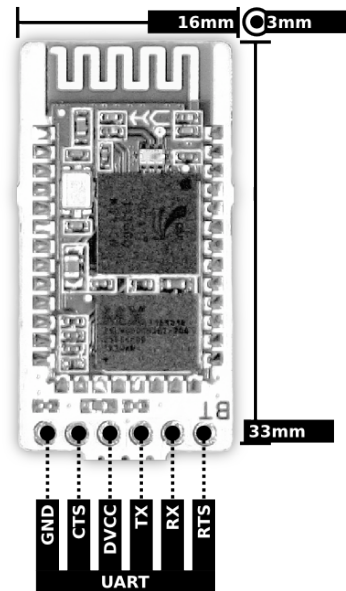


Fig. 1. Pin-out and physical dimensions.

¹ http://bitalino.com/datasheets/HC06_Datasheet.pdf



PLUX – Wireless Biosignals, S.A.
Av. 5 de Outubro, n. 70 – 8.
1050-059 Lisbon, Portugal
bitalino@plux.info
<http://bitalino.com/>

REV A

© 2016 PLUX

This information is provided "as is," and we make no express or implied warranties whatsoever with respect to functionality, operability, use, fitness for a particular purpose, or infringement of rights. We expressly disclaim any liability whatsoever for any direct, indirect, consequential, incidental or special damages, including, without limitation, lost revenues, lost profits, losses resulting from business interruption or loss of data, regardless of the form of action or legal theory under which the liability may be asserted, even if advised of the possibility of such damages.



BEWARE: DIRECT OR INDIRECT COUPLING TO THE MAINS MAY RESULT IN SHOCKING HAZARD

